



LATVIJAS UNIVERSITĀTE
**MATERIĀLU
MEHĀNIKAS
INSTITŪTS**

Aizkraukles iela 23, Rīga, LV-1006, Latvia

MATERIAL TESTING LABORATORY

Test Report Nr. 2207-01

Customer:

SIA GTR LV

“Lejasgāršas”, Inčukalns, Inčukalna pag., Inčukalna nov., LV-2141, Latvia

Registration number: 40203219907

Test object:

Terrace and fence boards Eco Deck Profile.

Test basis:

bending test after LVS EN 310:1993.

Test performed:

at LU MMI Material testing laboratory, from 25 July to 2 August 2022.

Test report is presented on 4 pages. It contains 2 tables and 1 graph.

Test apparatus:

- Width and thickness was determined with *Mitutoyo CD-20DCX* caliper.
Calibrated 28 February 2022 after LNMC G5/2015; certificate Nr. G0867K22.
- Deflection and load were determined with *ZwickRoell Z100 TEW* electromechanical material testing machine.
Calibrated 29 June 2019 after SS-NE ISO 7500-1:2018; certificate Nr. K1906291UH.
Equipped with bending stand:
Upper bending nose - \varnothing 30 mm and both lower bending supports - \varnothing 15 mm. Distance between supports - 380 mm. Rate of testing - 5.0 mm/min.
- Load and deflection data recording was performed with *ZwickRoell Z100 TEW* material testing machine. Data recording frequency - 10 Hz.

Samples:

Manufacturing and numbering was performed by customer.
Received for testing on 25 July 2022.
Terrace board nominal dimensions: length - 430 mm, width - 145 mm and thickness - 25 mm.
Fence board nominal dimensions: length - 430 mm, width - 155 mm and thickness - 12 mm.
Test conditions: temperature - 23 °C, relative humidity - 63 %.

Sample number	Product type	Width, mm	Thickness, mm
N1	Terrace boards	144.5	25.0
N2	Eco Deck Profile (black)	144.9	24.8
N3	Terrace boards	142.8	24.0
N7	Eco Deck Profile (terracotta)	142.9	24.3
N9	Terrace boards Eco Deck Profile (green)	143.3	24.2
N10	Terrace boards	145.7	24.8
N11	Eco Deck Profile (brown)	145.6	24.8
N5	Fence boards	156.6	12.0
N6	Eco Deck Profile	157.6	12.3

Results:

Samples were loaded to failure.

Sample number	Product type	Maximum load, N	Maximum deflection, mm	Bending strength, N/mm ²
N1	Terrace boards	2929	7.3	18.5
N2	Eco Deck Profile (black)	3045	6.6	19.5
N3	Terrace boards	4175	11.6	28.9
N7	Eco Deck Profile (terracotta)	4251	12.1	28.7
N9	Terrace boards Eco Deck Profile (green)	4288	12.5	29.1
N10	Terrace boards	3034	7.7	19.3
N11	Eco Deck Profile (brown)	2943	7.6	18.7
N5	Fence boards	950	20.1	24.0
N6	Eco Deck Profile	1004	14.4	24.0

Notes and deviations from standard:

Modulus of elasticity was not determined for the tested samples.
Non-destructive tests were not performed on test samples.
Samples were not conditioned. Moisture content is unknown.

Reports:

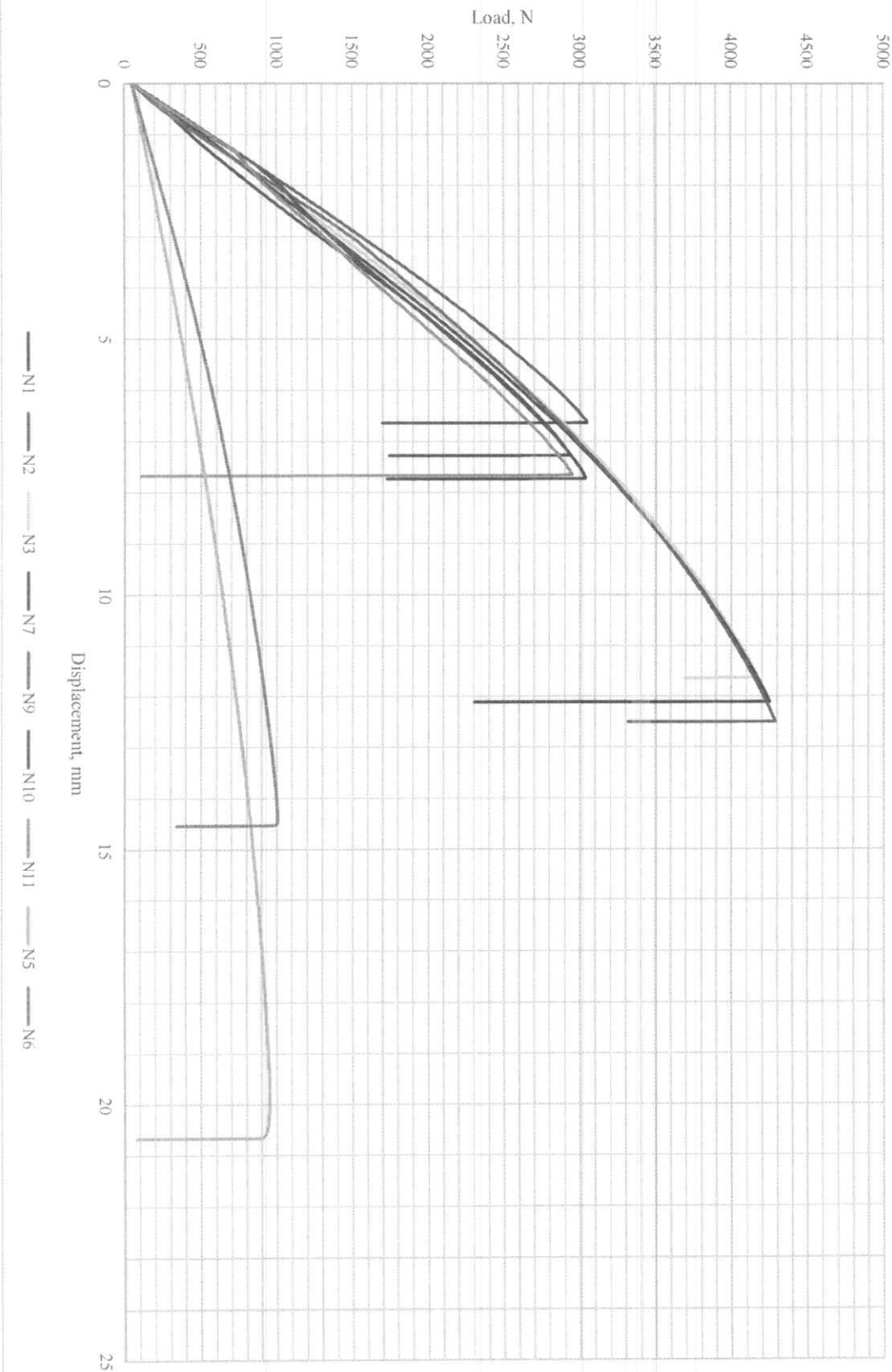
The test results are representative only of the material samples submitted for testing.
Incomplete reproduction of the test report is not permitted.

Tester:  (V. Skruls)

Head of the laboratory:  (E. Plūme)

2 August 2022.

Load - displacement graphs for tested samples





LATVIJAS UNIVERSITĀTE
**MATERIĀLU
MEHĀNIKAS
INSTITŪTS**

Aizkraukles iela 23, Rīga, LV-1006, Latvia
MATERIAL TESTING LABORATORY

Test Report Nr. 2207-01

Customer:

SIA GTR LV

“Lejasgāršas”, Inčukalns, Inčukalna pag., Inčukalna nov., LV-2141, Latvia

Registration number: 40203219907

Test object:

step and terrace board Ecodeckprofile.

Test basis:

bending test after customer methodology.

Test performed:

at LU MMI Material testing laboratory, on 17 November 2022.

Test report is presented on 3 pages. It contains 1 table and 1 graph.

Test apparatus:

- Width and thickness was determined with *Mitutoyo CD-20DCX* caliper.
Calibrated 28 February 2022 after LNMC G5/2015; certificate Nr. G0867K22.
- Deflection and load were determined with *ZwickRoell Z100 TEW* electromechanical material testing machine.
Calibrated 29 June 2019 after SS-NE ISO 7500-1:2018; certificate Nr. K1906291UH.
Equipped with bending stand:
Upper bending nose - \varnothing 30 mm and both lower bending supports – \varnothing 15 mm. Distance between supports – 380 mm. Rate of testing – 5.0 mm/min.
- Load and deflection data recording was performed with *ZwickRoell Z100 TEW* material testing machine. Data recording frequency – 10 Hz.

Samples:

Manufacturing and numbering was performed by customer.
Received for testing on 17 November 2022.
Sample nominal dimensions: length – 500 mm and thickness – 25 mm.
Test conditions: temperature – 19.6 °C, relative humidity – 40 %.

Results:

Samples were loaded to failure.

Sample number	Product type	Thickness, mm	Maximum load, N	Maximum deflection, mm
a41	step board Ecodeckprofile	25.0	6504	6.4
a2	terrace board Ecodeckprofile	24.5	3796	7.0

Notes and deviations from standard:.

Width of the samples was not determined.
Non-destructive tests were not performed on test samples.
Samples were not conditioned. Moisture content is unknown.

Reports:

The test results are representative only of the material samples submitted for testing.
Incomplete reproduction of the test report is not permitted.

Tester:  (V. Skruls)

Head of the laboratory:  (E. Plūme)

21 November 2022.

